



# Vehicle Tracking System

# PROCAM VEHICLE TRACKING SYSTEM

ULTIMATE TRACKING SOLUTION



All vehicles are fitted with Active tracking devices

Vehicle tracking systems is using Navigation Satellite System technology for locating the vehicle

Vehicle information can be viewed on Google Maps via the Internet

Can view vehicle tracking in Desktop and Mobile

# ARCHITECTURE

ULTIMATE TRACKING SOLUTION



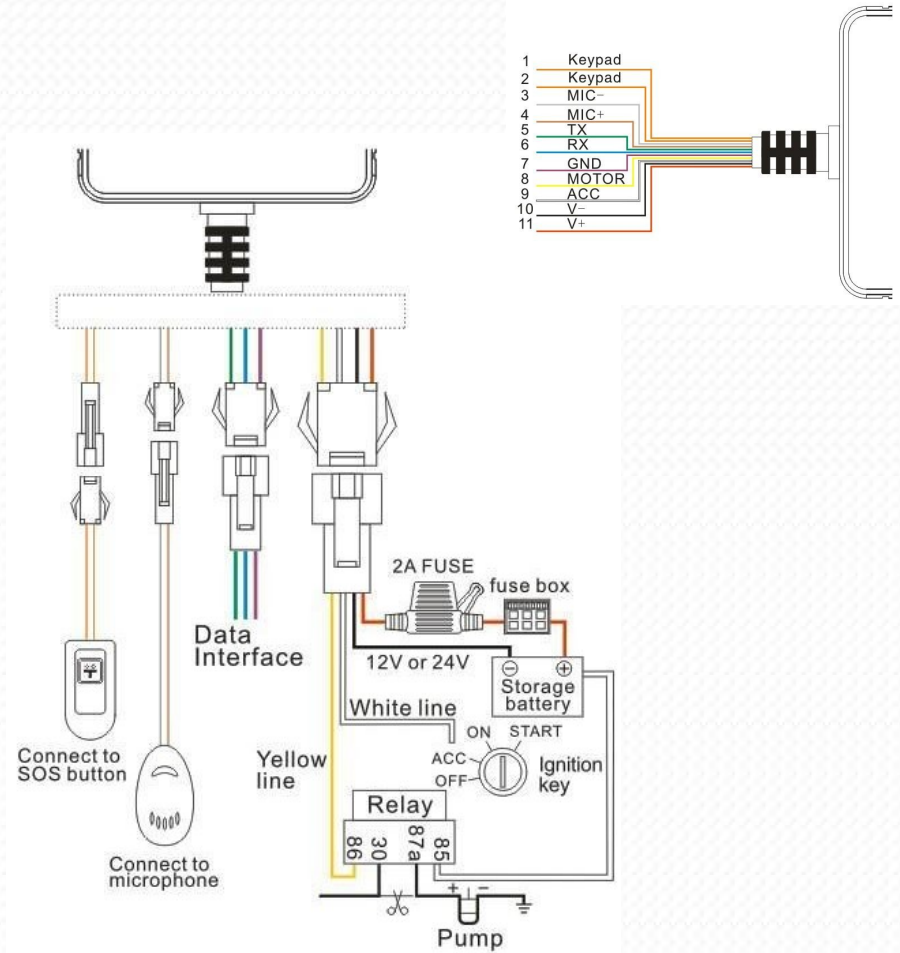
**GPS tracking:** The device fits into the vehicle and captures the GPS location information apart from other vehicle information at regular intervals to a central server. Other vehicle information can include altitude, reverse geo coding and turn off ignition, number of GPS satellites and a lot more.

**GPS tracking server:** The tracking server has three responsibilities: receiving data from the GPS tracking unit, securely storing it, and serving this information on demand to the user.

**User interface:** The UI determines how one will be able to access information, view vehicle data, and elicit important details from it.

# PRODUCT INFORMATION

ULTIMATE TRACKING SOLUTION



# PRODUCT INFORMATION – BASIC MODEL

## FEATURES AND BENEFITS

<b>Dimension</b>	106(L) x 54(W ) x 16(H) mm
<b>Weight</b>	96g
<b>Backup Battery</b>	450mAh / 3.7V
<b>Operation Temperature</b>	-25°C-60°C
<b>Humidity</b>	5% - 95%
<b>Standby Time</b>	160 hours
<b>GSM Frequencies</b>	850/900/1800/1900 MHz
<b>GPRS</b>	Class 12
<b>GPS Channel</b>	20
<b>GPS Sensitivity</b>	-159dBm
<b>Acquisition Sensitivity</b>	-144dBm
<b>Position Accuracy</b>	10m
<b>TTFF (Open Sky)</b>	Cold Start: < 38s
	Warm Start : < 15s
	Hot Start : < 2s
<b>GSM/GPS Antenna</b>	Built-in design
<b>LED Indicator</b>	GSM-green, GPS-blue, Power-red
<b>Data Transmit</b>	TCP, SMS
<b>Geo-fence</b>	View any existing Geo-fence in the map
<b>Speeding Alarm</b>	Report when speeds higher than the pre-set value.
<b>Low Power Alarm</b>	Alarm when backup battery is running out
<b>Non-movement Detection</b>	Movement alarm based on built-in 3D motion sensor
<b>Mileage Report</b>	Track by time/distance interval
<b>Remote Control</b>	Cut off petrol/electricity

# PRODUCT INFORMATION – BASIC MODEL

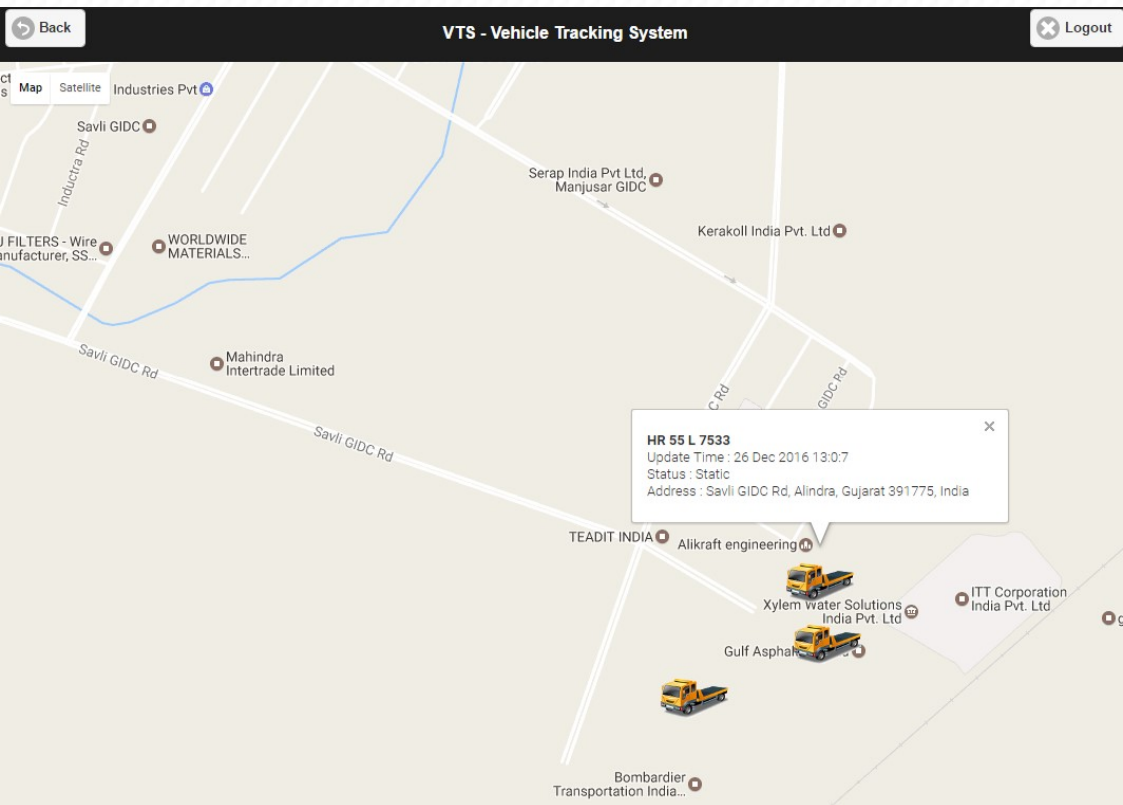
ULTIMATE TRACKING SOLUTION



<b>Dimension</b>	86.6(L) x 44(W) x 13.6(H) mm
<b>Weight</b>	50.5g
<b>Operation Temperature</b>	-20°C - 70°C
<b>Operation Voltage</b>	9-36vDC
<b>Humidity</b>	20% - 80%
<b>GSM Frequencies</b>	850/900/1800/1900 MHz
<b>GPRS</b>	Class 12
<b>GPS Sensitivity</b>	-159dBm
<b>Acquisition Sensitivity</b>	-144dBm
<b>Position Accuracy</b>	10m
<b>TTFF (Open Sky)</b>	Cold Start: < 38s
	Warm Start: < 32s
	Hot Start: < 2s
<b>GSM/GPS Antenna</b>	Built-in design
<b>LED Indicator</b>	GSM-green, GPS-blue, Power-red
<b>Data Transmit</b>	TCP, SMS
<b>Non-movement Detection</b>	Movement alarm based on built-in 3D motion sensor
<b>Mileage Report</b>	Track by time/distance interval

# PROCAM VEHICLE TRACKING SYSTEM

ULTIMATE TRACKING SOLUTION



**No Battery Life Concerns** - The unit is hardwired to your vehicle's battery.

**10 Second Location Updates** - The **FASTEST** location updates.

**Web-Based Tracking** - No software to install, view location data from any web browser.

**Extremely Accurate** - Utilizes GPS and GSM Cell Towers for super accurate location data.

**Detailed Reporting** - View, Save, and Print detailed driving data - up to 90 days history.

# LR/Way Bill Number


ULTIMATE TRACKING SOLUTION

Back VTS - Vehicle Tracking System Details

Map Satellite

**GJ 01 DY 9227**

Consignment Number : CN\_38898045  
 Update Time : 20 Mar 2017 12:33:18  
 Status : Offline  
 Address : Halol Bypass Rd, Halol G I D C, Halol, Gujarat 389350, India  
 Halt Reason : Parking  
 Halt Comments : Waiting for City Entry in Night  
 Vehicle Remarks : No Remarks



© 2017 PROCAM. All Rights Reserved.

Back VTS - Vehicle Tracking System Logout

Halt Info

Consignment Number

Remarks

© 2017 PROCAM. All Rights Reserved.

Back VTS - Vehicle Tracking System Logout

Vehicle Number : GJ 01 DY 9454  
 Consignment Number  
 Con\_43534

Details  
 Some Text here.

Vehicle Number : GJ 01 DY 7844  
 Consignment Number

Details

Vehicle Number : GJ 01 DU 6199  
 Consignment Number

Details

© 2017 PROCAM. All Rights Reserved.

Back VTS - Vehicle Tracking System Logout

Details  
 Details about..

Vehicle Number : MH 46 H 5583  
 Consignment Number  
 ConsignmentNo3242934

Details  
 Some Text here..

Vehicle Number : GL 01 DU 6215  
 Consignment Number  
 ConsignmentNo787

Details  
 Some text here..

+ Create

© 2017 PROCAM. All Rights Reserved.



# Halt Info

ULTIMATE TRACKING SOLUTION

Back VTS - Vehicle Tracking System Details

Map Satellite

**GJ 01 DY 9227**  
Consignment Number : CN\_38898045  
Update Time : 20 Mar 2017 12:33:18  
Status : Offline  
Address : Halol Bypass Rd, Halol G I D C, Halol, Gujarat 389350, India  
Halt Reason : Parking  
Halt Comments : Waiting for City Entry in Night  
Vehicle Remarks : No Remarks

© 2017 PROCAM. All Rights Reserved.

Back VTS - Vehicle Tracking System Logout

Halt Info

Consignment Number

Remarks

© 2017 PROCAM. All Rights Reserved.

Back VTS - Vehicle Tracking System Logout

Vehicle Number : GJ 01 DY 9454  
Reason  
Toll  
Comments  
Waiting in Toll.

Vehicle Number : GJ 01 DY 7844  
Reason  
Parking  
Comments

Vehicle Number : GJ 01 DU 6199  
Reason  
Select  
Comments

© 2017 PROCAM. All Rights Reserved.

Back VTS - Vehicle Tracking System Logout

Waiting in Toll

Vehicle Number : MH 46 H 5583  
Reason  
RTO  
Comments  
RTO Checking

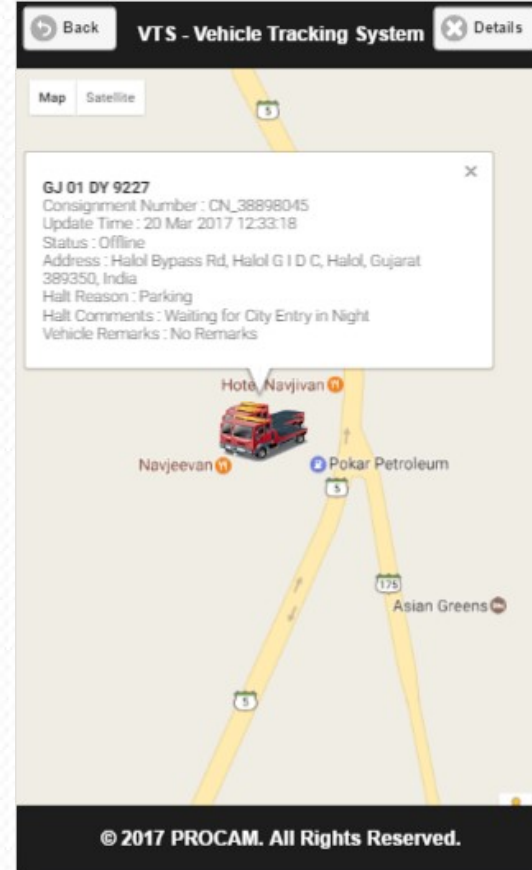
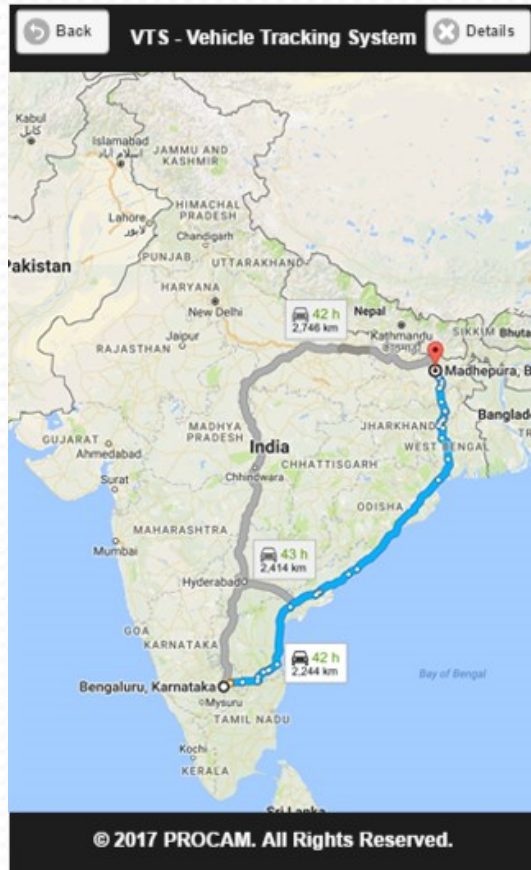
Vehicle Number : GL 01 DU 6215  
Reason  
Fuel  
Comments  
Halted for fuel.

+ Create

© 2017 PROCAM. All Rights Reserved.

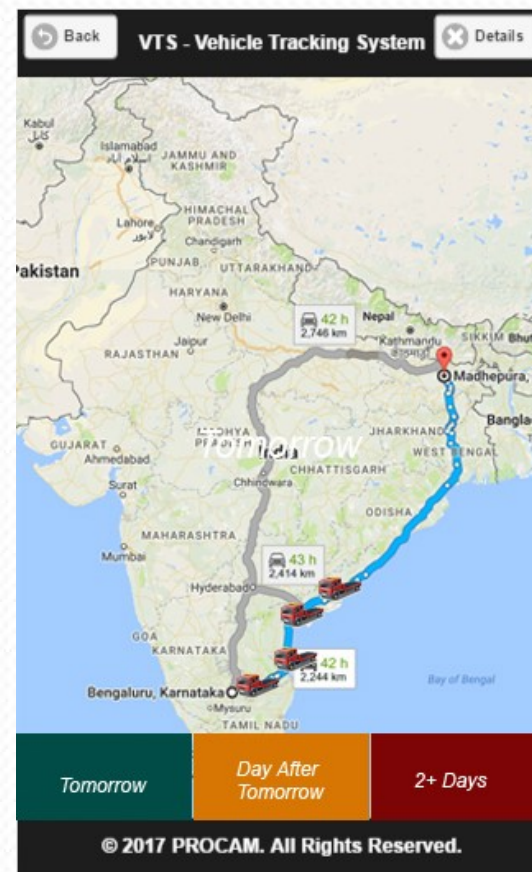
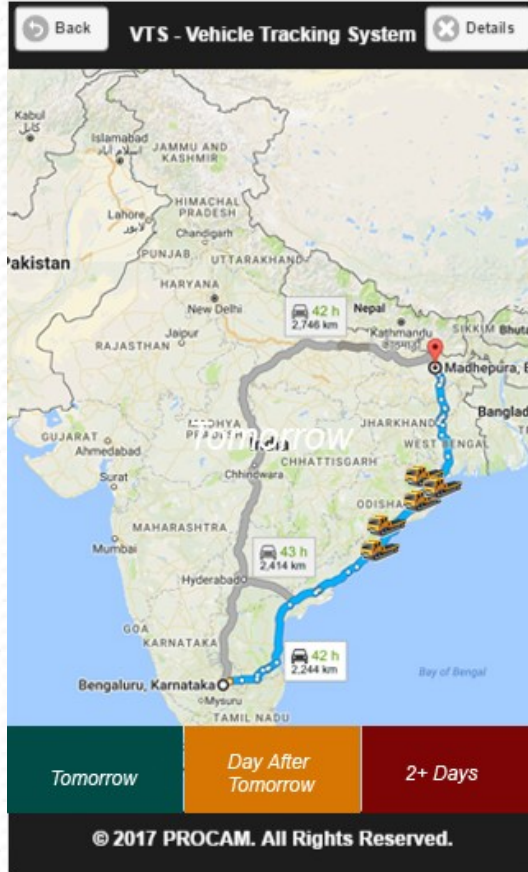
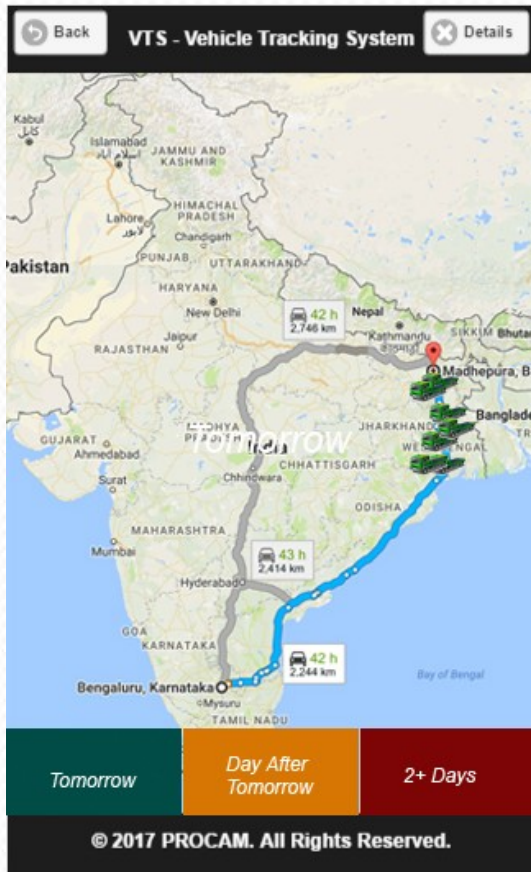
# Route Mapping

ULTIMATE TRACKING SOLUTION



# Time & Distance

ULTIMATE TRACKING SOLUTION



# LIVE TRACKING

## ULTIMATE TRACKING SOLUTION

The screenshot displays a live tracking application interface. The main window shows a map of Barod Rd, Jhounta, Madhya Pradesh, India. A vehicle icon is positioned on the map, with a tooltip providing details for GJ 01 DY 9454: Status: Static (2Hour50Minute), Latest update: 2017/03/12 10:16:40, Position: 2017/03/12 15:27:53. The interface includes a sidebar with a tree view of vehicle groups, a search bar for targets, and a table of active vehicles.

**Monitor Statistics Product**

Blade Trailer(6/6)

- PROCAM GROUP
  - ALSTOM(0/0)
  - Ansaldo(0/0)
  - Blade Trailer(6/6)
  - Chennai Yard(2/2)
  - Gamesa(1/1)
  - QNGR(6/6)
  - RS 11(0/0)
  - RS10 Glovis(0/0)
  - Siemens(0/0)
  - SUZLON 1(0/0)
  - SUZLON 2(0/0)
  - VadodaraYard(6/6)

My Target

Please Input Name or IMEI No.

All(6) Online(6) Offline(0) Inactive(0)

Sort AddGroup

Vehicle ID	Status
GJ 01 DU 6199	Static
GJ 01 DY 7844	Static
GJ 01 DY 9227	Static
GJ 01 DY 9454	Static
GL 01 DU 6215	Static
MH 46 H 5583	Static

Barod Rd, Jhounta, Madhya Pradesh 465550, India

Refresh After 1 Seconds

Map Satellite

Distance Traffic

POI

GJ 01 DY 9454  
Status: Static(2Hour50Minute)  
Latest update: 2017/03/12 10:16:40  
Position: 2017/03/12 15:27:53  
Tracking Playback Enlarge More

GL 01 DU 6215

Barod Rd

Barod Rd

Barod Rd

Barod Rd

Barod Rd

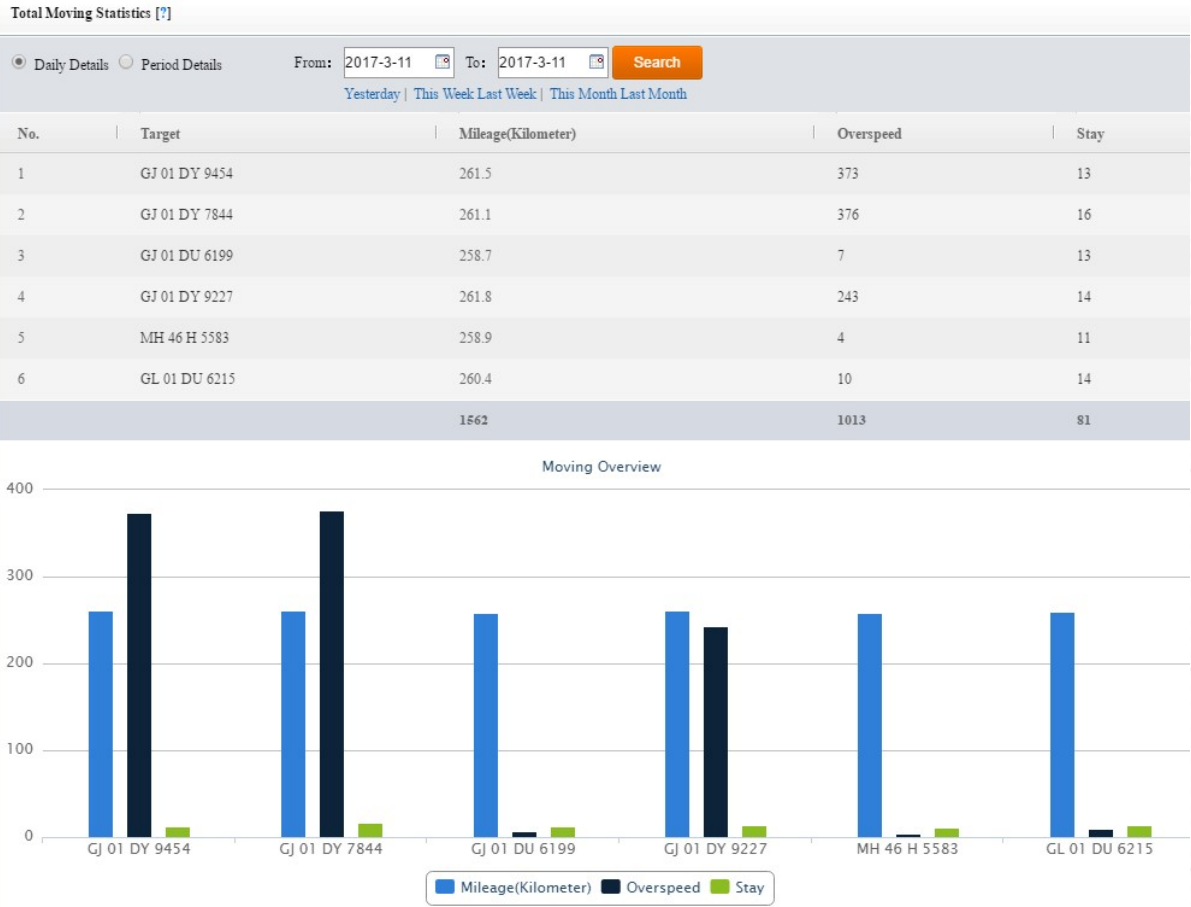
Barod Rd

Google

Map data ©2017 Google 100 m Terms of Use Alarm Settings

# STAT REPORT

## ULTIMATE TRACKING SOLUTION



# OVERSPEED REPORT

## ULTIMATE TRACKING SOLUTION

**Overspeed Details[?]**

Target:  ▼

From:  To:

[Today](#) [Yesterday](#) | [This Week](#) [Last Week](#)

No.	Location Time	Speed	Longitude	Latitude	Location	Operation
1	2017-03-11 00:01:35	60	75.270684	22.80852	75.270684,22.80852	<a href="#">View location</a>
2	2017-03-11 00:01:45	64	75.269457	22.809604	75.269457,22.809604	<a href="#">View location</a>
3	2017-03-11 00:01:55	65	75.268168	22.810742	75.268168,22.810742	<a href="#">View location</a>
4	2017-03-11 00:02:05	67	75.266835	22.811911	75.266835,22.811911	<a href="#">View location</a>
5	2017-03-11 00:02:45	60	75.263822	22.816995	75.263822,22.816995	<a href="#">View location</a>
6	2017-03-11 00:05:36	70	75.250675	22.843451	75.250675,22.843451	<a href="#">View location</a>
7	2017-03-11 00:11:23	61	75.247306	22.896568	75.247306,22.896568	<a href="#">View location</a>
8	2017-03-11 00:11:33	62	75.247342	22.898171	75.247342,22.898171	<a href="#">View location</a>
9	2017-03-11 00:11:33	62	75.247342	22.898171	75.247342,22.898171	<a href="#">View location</a>
10	2017-03-11 00:12:03	62	75.24744	22.902637	75.24744,22.902637	<a href="#">View location</a>
11	2017-03-11 00:12:13	62	75.247484	22.904251	75.247484,22.904251	<a href="#">View location</a>
12	2017-03-11 00:55:20	60	75.255386	22.960457	75.255386,22.960457	<a href="#">View location</a>
13	2017-03-11 00:55:30	62	75.255626	22.961975	75.255626,22.961975	<a href="#">View location</a>
14	2017-03-11 00:55:40	62	75.255866	22.963537	75.255866,22.963537	<a href="#">View location</a>
15	2017-03-11 00:55:50	61	75.256115	22.965068	75.256115,22.965068	<a href="#">View location</a>
16	2017-03-11 00:56:00	62	75.256346	22.966602	75.256346,22.966602	<a href="#">View location</a>
17	2017-03-11 00:56:10	64	75.256595	22.968171	75.256595,22.968171	<a href="#">View location</a>

# STAY/HALT REPORT

ULTIMATE TRACKING SOLUTION

Stay Details					
Target:	<input type="text" value="GJ 01 DY 9454"/>				
From:	<input type="text" value="2017-3-11 00:00:00"/>	To:	<input type="text" value="2017-3-12 00:00:00"/>	<input type="button" value="Search"/>	
<a href="#">Today Yesterday</a>   <a href="#">This Week Last Week</a>   <a href="#">This Month Last Month</a>					
No.	Begin Time	End Time	Stay Duration	Location	Operation
1	2017-03-11 00:05:36	2017-03-11 00:10:36	5Minute	Chittorgarh - Khargone - Bhusawal Highway, Khandigara, Madhya Pradesh 454665, India	<a href="#">View location</a>
2	2017-03-11 00:15:00	2017-03-11 00:42:00	27Minute	Chittorgarh - Khargone - Bhusawal Highway, Chho Khurd, Madhya Pradesh 454660, India	<a href="#">View location</a>
3	2017-03-11 00:43:00	2017-03-11 00:51:50	8Minute 50Second	Chittorgarh - Khargone - Bhusawal Highway, Chho Khurd, Madhya Pradesh 454660, India	<a href="#">View location</a>
4	2017-03-11 00:59:10	2017-03-11 01:06:06	6Minute 56Second	Chittorgarh - Khargone - Bhusawal Highway, Chamunda Khedi, Madhya Pradesh 454660, India	<a href="#">View location</a>
5	2017-03-11 01:28:43	2017-03-11 01:35:03	6Minute 20Second	Chittorgarh - Khargone - Bhusawal Highway, Madhya Pradesh 457441, India	<a href="#">View location</a>
6	2017-03-11 02:41:00	2017-03-11 02:45:00	4Minute	75.128764,23.655497	<a href="#">View location</a>
7	2017-03-11 02:59:55	2017-03-11 03:11:52	11Minute 57Second	75.161866,23.598806	<a href="#">View location</a>
8	2017-03-11 03:26:53	2017-03-11 03:39:10	12Minute 17Second	75.251742,23.547035	<a href="#">View location</a>
9	2017-03-11 04:32:19	2017-03-11 04:47:39	15Minute 20Second	75.552311,23.334671	<a href="#">View location</a>
10	2017-03-11 05:16:03	2017-03-11 05:26:33	10Minute 30Second	75.711176,23.255882	<a href="#">View location</a>
11	2017-03-11 05:46:17	2017-03-11 05:51:29	5Minute 12Second	75.801911,23.226988	<a href="#">View location</a>

# STAT REPORT

ULTIMATE TRACKING SOLUTION

Mileage Report[?]

Query By:  Daily Details  Period Details  Batch Export(Beta)

Target: GJ 01 DY 9454

From: 2017-02-01 To: 2017-02-28

[Yesterday](#) | [This Week](#) | [Last Week](#) | [This Month](#) | [Last Month](#)

No.	Target	Date	Mileage(Kilometer)	Overspeed	Overspeed Setting(km/h)	Stay
1	GJ 01 DY 9454	2017-01-31	0	0	60	0
2	GJ 01 DY 9454	2017-02-01	17.8	18	60	2
3	GJ 01 DY 9454	2017-02-02	221.2	383	60	17
4	GJ 01 DY 9454	2017-02-03	0	0	60	0
5	GJ 01 DY 9454	2017-02-04	0	0	60	0
6	GJ 01 DY 9454	2017-02-05	103.6	42	60	3
7	GJ 01 DY 9454	2017-02-06	100.7	128	60	5
8	GJ 01 DY 9454	2017-02-07	351.8	344	60	21
9	GJ 01 DY 9454	2017-02-08	139	201	60	8
10	GJ 01 DY 9454	2017-02-09	79.5	108	60	4
11	GJ 01 DY 9454	2017-02-10	170.6	271	60	9
12	GJ 01 DY 9454	2017-02-11	263.8	675	60	10
13	GJ 01 DY 9454	2017-02-12	450.1	1241	60	17
14	GJ 01 DY 9454	2017-02-13	518.3	1555	60	19
15	GJ 01 DY 9454	2017-02-14	127.1	183	60	9
16	GJ 01 DY 9454	2017-02-15	0	0	60	0





# Thank You!